



SOIL, WASTE & VENT SYSTEM



an *Aliaxis* company

★★★
LEAD-FREE
PIPE SYSTEMS

SUITABLE FOR BUILDINGS,
HOUSES AND CIVIL
CONSTRUCTION PURPOSES.



CONTENTS



SYSTEM FEATURES & ADVANTAGES

2

- 2 SWV System
- 4 Ecotech Green Pipes

ACCREDITATION & SPECIFICATION

7

- 7 Quality & Certification
- 8 Specifications & Standards

PRODUCT DETAILS

10

- 10 SWV Pipes
- 11 SWV Fittings
- 30 Solvent Cement

INSTALLATION & LAYOUT

34

- 34 SWV System Layout
- 36 Installation Guideline
- 37 FAQs

ABOUT US

38

- 38 About Paling Industries
- 38 About Aliaxis

PRODUCT RANGE

SOIL, WASTE & VENT SYSTEM

FEATURES

- High quality of finish with smooth internal and external surfaces
- Provide low coefficient of flow friction
- Excellent resistance to chemicals found in domestic effluent
- Remain stable under elevated temperature
- Formulated to withstand weathering effect



ADVANTAGES

- Excellent Performance
- Chemical and Corrosion Resistance
- High Flow Capacity
- Durability and Strength
- Low Installation Costs



APPLICATION

Paving Soil, Waste and Vent Piping Systems are used in all types of construction, in particular residential, commercial and industrial buildings.







green pipes

for greener home

The revolutionized **Paling Ecotech Pipe** is a unique innovation that focuses on conserving and preserving our precious environment for the benefit of future generations.

5 Features of Paling Ecotech Pipe

- 1 UNIQUE CORE** – Unlike conventional single-layer uPVC pipes, Paling EcoTech Pipe has a center layer that is made of reprocessed materials generated from the manufacturing process based on Paling's very own premium formulation.
- 2 ALGAE RESISTANT** – This unique pipe is also designed as such that it prevents algae or other microbial growth inside the pipe to maintain a smooth bore for better flow rate.
- 3 ECO-FRIENDLY** – Paling EcoTech Pipe is made mostly from reprocessed materials, and is also lead-free. Hence, this pipe is safe for both humans and the environment.
- 4 HIGH PERFORMANCE** – This product has been tested and proven to provide performance at par or exceeding BSEN 1329. This high performance ensures excellent drainage system.
- 5 ENERGY SAVING** – This three-layer piping system is produced using advanced co-extrusion technology which uses less power during production while increasing efficiency and productivity of the process. This is a big step in conserving energy and resources for long term environment sustainability.

With the 5 special features, Paling EcoTech Pipe boasts a high 'Green Building Index' (GBI) that provides energy savings, water savings, and is environmentally-friendly which reduces the impact on the environment.



PRODUCT RANGE

ECOTECH PIPES

FEATURES

- High quality of finish with smooth internal and external surfaces
- Provide low coefficient of flow friction
- Excellent resistance to chemicals found in domestic effluent
- Remain stable under elevated temperature
- Complies with BS EN 1329, BS 4514 and MS 1063
- Green pages listed and contributes to GBI points



ADVANTAGES

- Premium Formulation and Reliability
- Eco-Friendly
- High Drainage Performance
- Very Competitive Cost
- Algae Resistance



APPLICATION

Paling Soil, Waste and Vent Piping Systems are used in all types of construction, in particular residential, commercial and industrial buildings.



greenpages
malaysia



PALING ECOTECH PIPES



WHY IS IT GREEN?

Made of 100% (by mass) of Pre-Consumer Recycle Materials that generate in house from the manufacturing process.

A three layer piping system utilize advanced co-extrusion technology in its production, this increase efficiency and productivity. Therefore, less power were used during production processes.

Fully recyclable and lead free.

PRODUCT FEATURES

- Made of 100% recycle materials.
- Less power consumption with the utilization of advance co-extrusion technology during the manufacturing processes.
- A three layer piping systems that provide superior performance at an affordable price.
- Environmental friendly recyclable without compromise product quality.
- Fully recyclable and lead free.
- Prohibit algae growth inside pipe by blocking light penetration.

COMPANY DETAILS

PALING INDUSTRIES SDN BHD

Lot 12, Jalan Perusahan 4,
68100 Batu Caves, Selangor, Malaysia.

TEL +603 6189 8333

FAX +603 6188 3810

EMAIL sales@paling.com.my

WEB www.paling.com.my

The accuracy of this Product Data Sheet has been confirmed from information provided by the company and/or other sources and will not be responsible for any errors or omissions. The company and/or other sources will not be responsible for any errors or omissions. The company and/or other sources will not be responsible for any errors or omissions.



ECO FRIENDLY PIPE

1. Lead-free
2. Three-layers technology
 - External layers made of premium formulation
 - Central layer made of reprocessed materials



QUALITY & CERTIFICATION



SYSTEM CERTIFICATION

FITTINGS

1. Unplasticized Polyvinyl Chloride (PVC-U) Fittings for Soil and Waste Discharge (Low and High Temperature) within the Building Structure.
2. Unplasticized Polyvinyl Chloride (PVC-U) Fittings for Non-Pressure underground Drainage and Sewerage.

PIPES

1. Unplasticized Polyvinyl Chloride (PVC-U) Pipes for Soil and Waste Discharge (Low and High Temperature) within the Building Structure.
2. Paling Ecotech Pipes is made from reprocessed material, is lead free and earns high on Green Building Index.

SOLVENT CEMENT

1. Coloursolve / Clearsolve Polyvinyl Chloride (PVC) Solvent Cement.

PIPES

MODEL PREMIUM	NOM SIZE (mm)	AREA CODE	SPECIFICATION
SWV Pipes	36, 43 & 56	B	BS EN 1329/ MS 1063
SWV Pipes	82	B	BS 4514
SWV Pipes	110	BD	BS EN 1329/ MS 1063
SWV Pipes	160	B & BD	BS EN 1329/ MS 1063
SWV Pipes	200, 250 & 315	BD	BS EN 1329/ MS 1063

FITTINGS

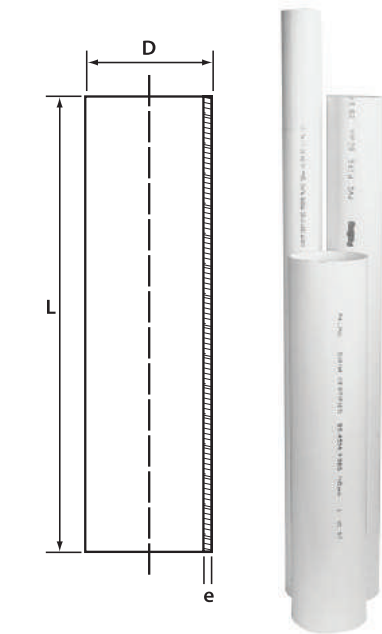
MODEL	NOM.SIZE (mm)	SPECIFICATION
Swept Bend	36,43,56,110,160 & 200	BS EN 1329/ MS 1063
Swept Bend with Inspection Opening	43,56,110,160 & 200	BS EN 1329/ MS 1063
Knuckle Bend Plain	36 & 43	BS EN 1329/ MS 1063
41° Unswept Bend	110	BS EN 1329/ MS 1063
45° Unswept Bend	36, 43, 56, 110, 160 & 200	BS EN 1329/ MS 1063
45° Unswept Bend with Inspection Opening	56, 110 & 160	BS EN 1329/ MS 1063
68° Unswept Bend	110, 160 & 200	BS EN 1329/ MS 1063
Swept Branch	36, 43, 56, 110, 160, 160x110, 200, 200x160	BS EN 1329/ MS 1063
Swept Branch with Inspection Opening	43, 56, 110, 160, 160x110 & 200	BS EN 1329/ MS 1063
Swept Branch with Inspection Opening (L/R)	110	BS EN 1329/ MS 1063
45° Y- Branch	56, 110, 160, 160x110, 200, 250 & 315	BS EN 1329/ MS 1063
45° Y- Branch with Inspection Opening	56, 110 & 160x110	BS EN 1329/ MS 1063
Swept Double Branch	56 & 110	BS EN 1329/ MS 1063
Swept Double Branch with Inspection Opening	56 & 110	BS EN 1329/ MS 1063
Swept Reducing Double Branch	160x110	BS EN 1329/ MS 1063
Swept Reducing Double Branch with Inspection Opening	160x100	BS EN 1329/ MS 1063
UnSwept Reducing Double Branch	160x110	BS EN 1329/ MS 1063
UnSwept Reducing Double Branch with Inspection Opening	160x110	BS EN 1329/ MS 1063
Unswept 1, 2, 3 & 4 Way Branch	110x56	BS EN 1329/ MS 1063
Straight Coupler	36, 43, 56, 110, 160, 200, 250 & 315	BS EN 1329/ MS 1063
Expansion Coupler	110 & 160	BS EN 1329/ MS 1063
Pipe Sleeve	36, 43, 56, 110, 160, 200, 250 & 315	BS EN 1329/ MS 1063
Socket Plug with Screw on Cap	36, 43, 56, 110, 160 & 200	BS EN 1329/ MS 1063
Bush/ Socket Reducer	43x36, 56x36, 56x43, 110x56, 160x110 & 200x160	BS EN 1329/ MS 1063
Concentric Reducer	100x56 & 160x110	BS EN 1329/ MS 1063
Level Invert Reducer	56x36, 110x56, 200x160	BS EN 1329/ MS 1063
Inspection Opening & Frame	110x56	BS EN 1329/ MS 1063
WC Connecting Bend	110	BS EN 1329/ MS 1063
WC Connecting Bend with Inspection Opening	110	BS EN 1329/ MS 1063
WC Pan Connector	110	BS EN 1329/ MS 1063
WC Pan Elbow Connector	110	BS EN 1329/ MS 1063
Seal Ring Adaptor	110 & 160	BS EN 1329/ MS 1063

FITTINGS

MODEL	NOM.SIZE (mm)	SPECIFICATION
Boss Connector <i>with Bracket</i>	110x (36, 43 & 56)	BS EN 1329/ MS 1063
'P' Trap	110	BS EN 1329/ MS 1063
'P' Trap <i>with Inspection Opening</i>	56 & 100	BS EN 1329/ MS 1063
'S' Trap <i>with Inspection Opening</i>	110	BS EN 1329/ MS 1063
Vent Cowl	56, 110 & 160	BS EN 1329/ MS 1063
Weather Apron Flat	110	BS EN 1329/ MS 1063
Extension Grating Collar	110x14	BS EN 1329/ MS 1063
Floor Gully with T trap	110x43	BS EN 1329/ MS 1063
Swept Bend	82	BS 4514/ MS1063
Swept Bend <i>with Inspection Opening</i>	82	BS 4514/ MS1063
45° Unswept Bend	82	BS 4514/ MS1063
45° Unswept Bend <i>with Inspection Opening</i>	82	BS 4514/ MS1063
Swept Branch	82	BS 4514/ MS1063
Swept Branch <i>with Inspection Opening</i>	82	BS 4514/ MS1063
45° Y- Branch	82 & 100x82	BS 4514/ MS1063
45° Y- Branch <i>with Inspection Opening</i>	82 & 100x82	BS 4514/ MS1063
Straight Coupler	82	BS 4514/ MS1063
Expansion Coupler	82	BS 4514/ MS1063
Pipe Sleeve	82	BS 4514/ MS1063
Socket Plug <i>with Screw on Cap</i>	82	BS 4514/ MS1063
Bush/ Socket Reducer	82x56 & 110x82	BS 4514/ MS1063
Concentric Reducer	82x56	BS 4514/ MS1063
Level Invert Reducer	82x56 & 110x82	BS 4514/ MS1063
Inspection Opening & Frame	82x56, 110x82 & 160x82	BS 4514/ MS1063
Seal Ring Adaptor	82	BS 4514/ MS1063
Boss Connector <i>with Bracket</i>	82x (36, 43, 56, 110 & 160)	BS 4514/ MS1063
'P' Trap <i>with Inspection Opening</i>	82	BS 4514/ MS1063
Vent Cowl	82	BS 4514/ MS1063
Grating	110x82	BS 4514/ MS1063
Floor Gully <i>with Inspection Opening</i>	110x56	BS EN 1253
Floor Gully <i>with Trap and Inspection Opening</i>	110x82	BS EN 1253
Top Removable Trapped Floor Gully	110x82	BS EN 1253

SWV PIPES

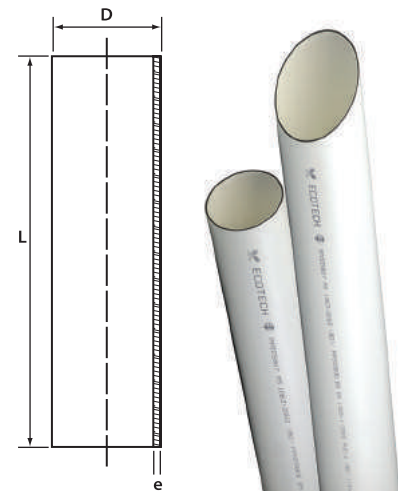
For Solvent weld connection to all fittings.



CODE NO.	NOM. SIZE (mm)	Mean Outside Diameter D (mm)		Min Wall Thickness e (mm)	Length L (mm)	AREA CODE
		min	max			
1200 036 58 01	36	36.2	36.5	3.0	5.8	B
1200 043 58 01	43	42.8	43.1	3.0	5.8	B
1200 056 58 01	56	55.8	56.1	3.0	5.8	B
1200 082 58 01	82	82.4	82.8	3.0	5.8	B
1200 110 58 01	110	110.0	110.3	3.2	5.8	BD
1200 160 58 01	160	160.0	160.4	3.2	5.8	B
1200 160 58 BD 01	160	160.0	160.4	4.0	5.8	BD
1200 200 58 01	200	200.0	200.5	4.9	5.8	BD
1200 250 58 01	250	250.0	250.5	6.2	5.8	BD
1200 315 58 01	315	315.0	315.6	7.7	5.8	BD

Other length are available on special order.

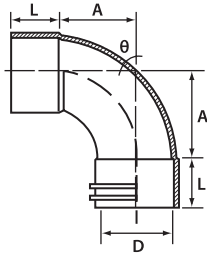
ECOTECH PIPES



CODE NO.	NOM. SIZE (mm)	Mean Outside Diameter D (mm)		Min Wall Thickness e (mm)	Length L (mm)	Pipe End	AREA CODE
		min	max				
1210 082 58 01	82	82.4	82.8	3.0	5.8	PE	B
1210 110 58 01	110	110.0	110.3	3.2	5.8	PE	BD
1210 160 58 01	160	160.0	160.4	3.2	5.8	PE	B
1210 160 58 BD 01	160	160.0	160.4	4.0	5.8	PE	BD

SWEPT BEND

To solvent weld to pipes or fittings at both ends.



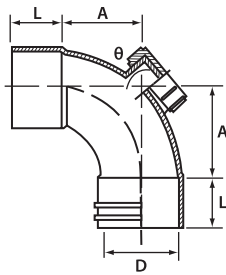
CODE NO.	NOM. SIZE (mm)	ANGLE θ	DIMENSIONS (mm)		
			L	A	D
2201 036 01	36	87.5°	24	28	36
2201 043 01	43	87.5°	28	27	43
2201 056 01	56	87.5°	30	36	56
2201 082 01	82	87.5°	45	65	82
2201 110 01*	110	87.5°	51	73	110
2201 160 01*	160	87.5°	76	120	160
2201 200 01*	200	89°	94	118	200

* Available in MF & FF

SWEPT BEND

with Inspection Opening

To solvent weld to pipe at both ends.

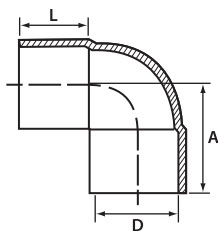


CODE NO.	NOM. SIZE (mm)	ANGLE θ	DIMENSIONS (mm)		
			L	A	D
2202 043 01	43	87.5°	28	27	43
2202 056 01	56	87.5°	30	36	56
2202 082 01	82	87.5°	45	65	82
2202 110 01*	110	87.5°	51	73	110
2202 160 01*	160	87.5°	76	120	160
2202 200 01*Δ	200	89°	94	118	200

* Available in MF & FF

Δ Fabrication item

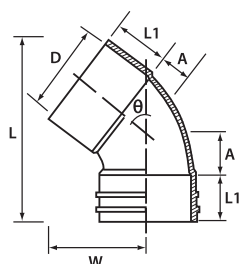
KNUCKLE BEND PLAIN



CODE NO.	NOM. SIZE (mm)	DIMENSIONS (mm)		
		L	A	D
2204 036 01	36	21	45	36
2204 043 01	43	24	52	43

45° UNSWEPT BEND

For Solvent weld to pipe.

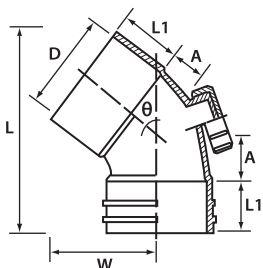


CODE NO.	NOM. SIZE (mm)	ANGLE θ	DIMENSIONS (mm)				
			L	L1	W	A	D
2210 036 01	36	45°	72	23	37	6	36
2210 043 01	43	45°	84	27	45	8	43
2210 056 01	56	45°	96	30	53	10	56
2210 082 01	82	45°	140	43	74	15	82
2210 110 01	110	45°	170	50	93	20	110
2210 160 01	160	45°	255	76	140	30	160
2210 200 01	200	45°	-	85	-	65	200

45° UNSWEPT BEND

with Inspection Opening

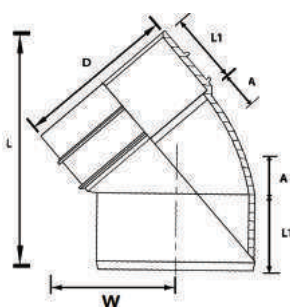
For Solvent weld to pipe, fitted with inspection opening.



CODE NO.	NOM. SIZE (mm)	ANGLE	DIMENSIONS (mm)				
		θ	L	L1	W	A	D
2203 056 01	56	45°	96	30	53	10	56
2203 082 01	82	45°	140	43	74	15	82
2203 110 01	110	45°	170	50	93	20	110
2203 160 01	160	45°	255	76	140	30	160

41° UNSWEPT BEND

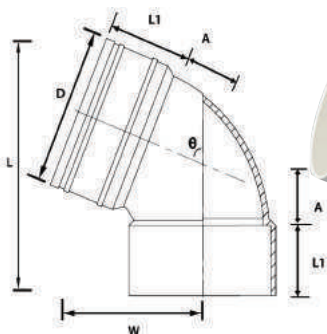
For Solvent weld to pipe.



CODE NO.	NOM. SIZE (mm)	ANGLE	DIMENSIONS (mm)				
		θ	L	L1	W	A	D
2207 110 01	110	41°	180	50	90	20	110

68° UNSWEPT BEND

For Solvent weld to pipe.



CODE NO.	NOM. SIZE (mm)	ANGLE	DIMENSIONS (mm)				
		θ	L	L1	W	A	D
2205 110 01	110	68°	205	52	117	56	110
2205 160 01	160	68°	290	80	170	74	160
2205 200 01*	200	68°	370	100	126	96	200

Available in Rubber Ring Joint

* Available in MF

SWEPT BRANCH

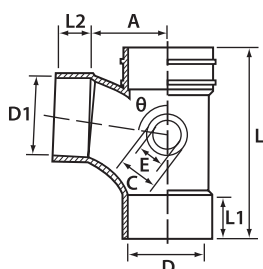
To solvent weld to pipe with integrally moulded boss adaptor socket to accept waste pipes or fittings.

new

new

CODE NO.	NOM. SIZE (mm)	ANGLE θ	DIMENSIONS (mm)							
			L	L1	L2	A	C	E	D	D1
2211 036 01	36	87.5°	93	23	23	30	-	-	36	36
2211 043 01	43	87.5°	109	27	27	31	-	-	43	43
2211 056 01	56	87.5°	136	30	30	45	-	-	56	56
2211 082 01	82	87.5°	206	45	45	76	-	43	82	82
2211 110 01*	110	87.5°	250	50	50	75	-	56	110	110
2211 110056 01	110x56	87.5°	207	51	31	75	56	-	110	56
2211 110082 01	110x82	87.5°	220	51	45	75	56	-	110	82
2211 160 01	160	87.5°	360	77	77	145	82	56	160	160
2211 160110 01	160x110	87.5°	312	76	48	120	-	56	160	110
2211 200 01	200	89°	381	86	86	206	-	-	200	200
2211 200160 01	200x160	89°	206	86	86	86	411	200	200	160

* Available in MF & FF



SWEPT BRANCH

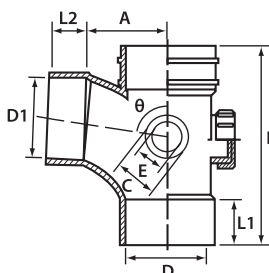
with Inspection Opening

To solvent weld to pipe with integrally moulded boss adaptor socket to accept waste pipes or fittings.

CODE NO.	NOM. SIZE (mm)	ANGLE θ	DIMENSIONS (mm)							
			L	L1	L2	A	C	E	D	D1
2212 043 01	43	87.5°	109	27	27	31	-	-	43	43
2212 056 01	56	87.5°	136	30	30	45	-	-	56	56
2212 082 01	82	87.5°	206	45	45	76	-	43	82	82
2212 110 01*	110	87.5°	250	50	50	75	-	56	110	110
2212 160 01	160	87.5°	360	77	77	145	82	56	160	160
2212 160110 01	160X110	87.5°	312	76	48	120	-	56	160	110
2212 200 01Δ	200	89°	381	86	86	206	-	-	200	200

* Available in MF & FF

Δ Fabrication item



SWEPT BRANCH

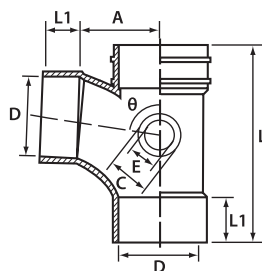
with Inspection Opening (L/R)

To solvent weld to pipe with integrally moulded boss adaptor socket to accept waste pipes or fittings.

CODE NO.	NOM. SIZE (mm)	ANGLE		DIMENSIONS (mm)					
		θ	L	L1	A	C	E	D	
2212 110 LE 01*	110	87.5°	250	52	80	56	76	110	
2212 110 RI 01*	110	87.5°	250	52	80	56	76	110	

* Left - Branch with left opening

* Right - Branch with right opening



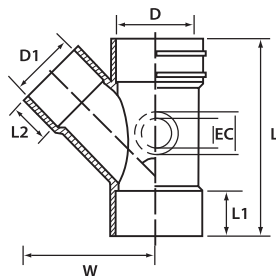
45° Y-BRANCH

With integrally moulded boss adaptor socket to accept waste pipes or fittings.

CODE NO.	NOM. SIZE (mm)	ANGLE		DIMENSIONS (mm)							
		θ	L	L1	L2	W	C	E	D	D1	
2213 056 01	56	45°	152	30	30	96	-	-	56	56	
2213 082 01	82	45°	205	44	44	136	-	43	82	82	
2213 110 01	110	45°	266	51	51	175	75	56	110	110	
2213 160 01	160	45°	400	72	72	-	-	-	160	-	
2213 200 01	200	45°	483	86	86	-	-	-	200	-	
2213 250 01	250	45°	609	103	103	-	-	-	250	-	
2213 315 01Δ	315	45°	723	117	117	-	-	-	315	-	
2213 110082 01*	110 x 82	45°	266	51	45	175	83	56	110	82	
2213 160110 01	160 x 110	45°	317	77	50	200	83	56	160	110	

* Combination item comprising Branch and Bush Socket Reducer.

Δ Fabrication item



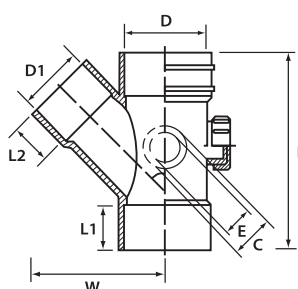
45° Y-BRANCH

with Inspection Opening

With integrally moulded boss adaptor socket to accept waste pipes or fittings.

* Combination item comprising 45° Y-Branch and Bush Socket Reducer.

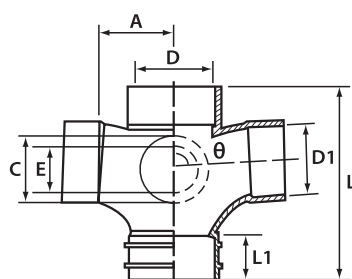
CODE NO.	NOM. SIZE (mm)	ANGLE			DIMENSIONS (mm)					
		Θ	L	L1	L2	W	C	E	D	D1
2214 056 01	56	45°	152	30	30	96	-	-	56	56
2214 082 01	82	45°	205	44	44	136	-	43	82	82
2214 110 01	110	45°	266	51	51	175	75	56	110	110
2214 110082 01*	110x82	45°	266	51	45	175	83	56	110	82
2214 160110 01	160x110	45°	317	77	50	200	83	56	160	110



SWEPT DOUBLE BRANCH

With integrally moulded boss adaptor socket to accept waste pipes or fittings.

CODE NO.	NOM.	ANGLE			DIMENSIONS				
	SIZE (mm)	Θ	L	L1	A	C	E	D	D1
2216 056 01	56	87.5°	136	28	48	-	43	56	56
2216 110 01	110	87.5°	246	50	80	82	56	110	110

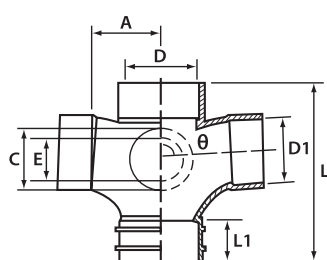


SWEPT DOUBLE BRANCH

with Inspection Opening

Access Plug connected to integrally moulded boss adaptor socket to provide inspection opening.

CODE NO.	NOM.	ANGLE			DIMENSIONS				
	SIZE (mm)	Θ	L	L1	A	C	E	D	D1
2217 056 01	56	87.5°	136	30	48	-	43	56	56
2217 110 01	110	87.5°	246	50	80	82	56	110	110

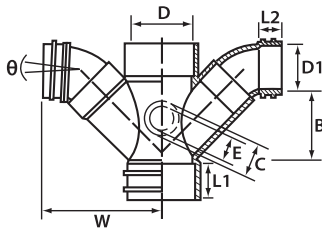


SWEPT
REDUCING
DOUBLE BRANCH

With integrally moulded boss adaptor socket to accept waste pipes or fittings.

Combination of Unswept Reducing Double Branch and 41° Bend.

CODE NO.	NOM.	ANGLE		DIMENSIONS						
	SIZE (mm)	Θ	L1	L2	W	B	C	E	D	D1
2216 160110 01	160 x110	87.5°	77	50	254	115	82	56	160	110



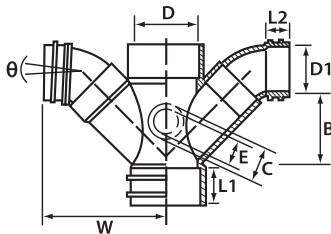
SWEPT
REDUCING
DOUBLE BRANCH

with Inspection Opening

Access Plug (2229) connected to integrally moulded boss adaptor socket to provide inspection opening.

Combination of Unswept Reducing Double Branch and 41° Bend.

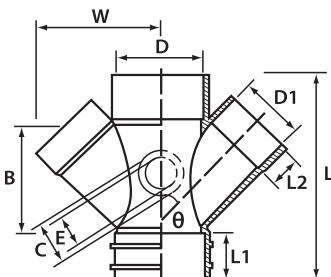
CODE NO.	NOM.	ANGLE		DIMENSIONS						
	SIZE (mm)	θ	L1	L2	W	B	C	E	D	D1
2217 160110 01	160 x110	87.5°	77	50	254	115	82	56	160	110



UNSWEPT
REDUCING
DOUBLE BRANCH

With integrally moulded boss adaptor socket to accept waste pipes or fittings.

CODE NO.	NOM. SIZE (mm)	ANGLE		DIMENSIONS (mm)							
		θ	L	L1	L2	W	B	C	E	D	D1
2218 160110 01	160 x110	45°	320	71	50	195	153	82	56	160	110

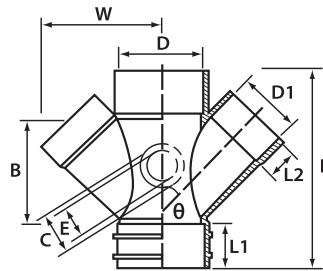


UNSWEPT REDUCING DOUBLE BRANCH

with Inspection Opening

Access Plug connected to integrally moulded boss adaptor socket to provide inspection opening .

CODE NO.	NOM. SIZE (mm)	ANGLE θ	DIMENSIONS (mm)								
			L	L1	L2	W	B	C	E	D	D1
2219 160110 01	160x110	45°	320	71	50	195	153	82	56	160	110

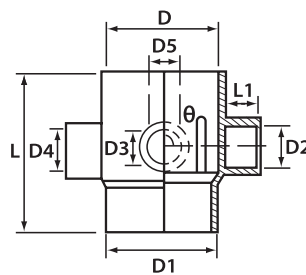


UNSWEPT 1, 2, 3 & 4 WAY BRANCH

To allow for waste pipe connection above soil branch.

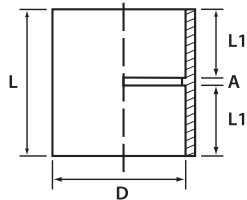
- (1) One Way Branch
- (2) Two Way Branch
- (3) Three Way Branch
- (4) Four Way Branch

CODE NO.	NOM. SIZE (mm)	ANGLE θ	L	L1	DIMENSIONS (mm)			
					D	D1	D2-D5	
2231 110056 01	110 X 56	88°	148	30	110	110	56	
2232 110056 01	110 X 56	88°	148	30	110	110	56	
2233 110056 01	110 X 56	88°	148	30	110	110	56	
2234 110056 01	110 X 56	88°	148	30	110	110	56	



STRAIGHT COUPLER

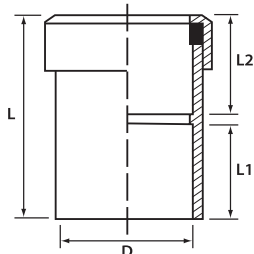
To solvent weld together two lengths of soil or waste pipes



CODE NO.	NOM. SIZE (mm)	DIMENSIONS (mm)			
		L	L1	A	D
2225 036 01	36	50	24	2	36
2225 043 01	43	59	28	3	43
2225 056 01	56	66	32	2	56
2225 082 01	82	97	47	3	82
2225 110 01	110	110	53	4	110
2225 160 01	160	167	82	4	160
2225 200 01	200	298	110	78	200
2225 250 01	250	370	130	110	250
2225 315 01	315	370	130	110	315

EXPANSION COUPLER

To provide an expansion joint for pipe connection or other materials pipe connection at base of stack. Combination of Seal Ring Adaptor & Straight Coupler.

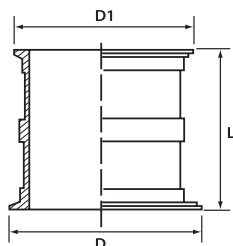


CODE NO.	NOM. SIZE (mm)	DIMENSIONS (mm)			
		L	L1	L2	D
2226 082 01	82	113	47	63	82
2226 110 01	110	133	54	75	110
2226 160 01	160	190	82	104	160

With Rubber Ring Seal

PIPE SLEEVE

For cast into RC floor slab/concrete wall to provide a through socket for pipes.



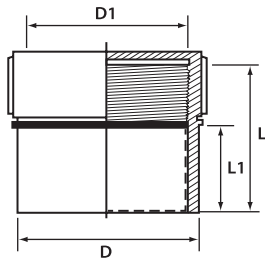
CODE NO.	NOM. SIZE (mm)	DIMENSIONS (mm)		
		L	D	D1
2252 036 01	36	112	72	56
2252 043 01	43	112	79	68
2252 056 01	56	112	92	76
2252 082 01	82	112	120	104
2252 110 01	110	112	147	131
2252 160 01	160	163	199	184
2252 200 01Δ	200	205	245	225
2252 250 01Δ	250	250	290	270
2252 315 01Δ	315	300	360	340

Δ Fabrication item

SOCKET PLUG

with Screw on Cap

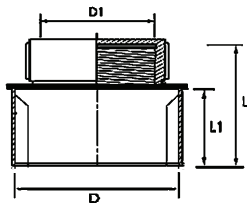
To plug up the open-end of a pipe line via a straight coupler, to allow for later accessibility.



CODE NO.	NOM. SIZE (mm)	DIMENSIONS (mm)			
		L	L1	D	D1
2229 036 01	36	45	23	36	32
2229 043 01	43	50	26	43	43
2229 056 01	56	46	28	56	52
2229 082 L46 01	82	46	23	82	76
2229 082 L67 01	82	67	44	82	76
2229 160 01	160	120	102	160	145
2229 200 110 01Δ	200	190	110	200	76

Δ Fabrication item

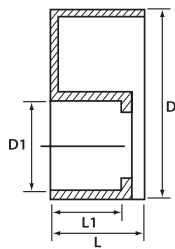
END CAP with access Opening



CODE NO.	NOM. SIZE (mm)	DIMENSIONS (mm)			
		L	L1	D	D1
2229 110 082 01	110	80	50	110	76

BUSH/SOCKET REDUCER

To allow for change in fittings socket diameter.



SOCKET

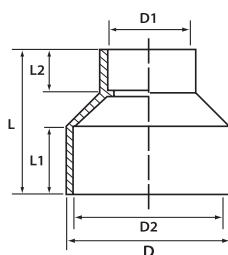


SPIGOT

CODE NO.	NOM. SIZE (mm)	DIMENSIONS (mm)			
		L	L1	D	D1
2236 043036 01	43x36	22	19	43	36
2236 056036 01	56x36	28	18	56	36
2236 056043 01	56x43	28	21	56	43
2236 082056 01	82x56	38	28	82	56
2236 110056 01	110x56	50	27	110	56
2236 110082 01	110x82	50	37	110	82
2236 160110 01	160x110	71	48	160	110
2236 200160 01	200x160	85	94	200	160

CONCENTRIC REDUCER

To allow for change in pipe diameter mainly used with 'P' Trap and Extension Grating Collar.

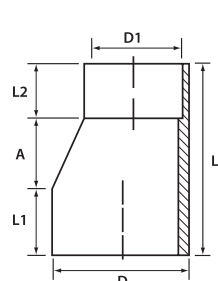


CODE NO.	NOM. SIZE (mm)	DIMENSIONS (mm)					
		L	L1	L2	D	D1	D2
2239 110056 01	110x56	109	50	28	-	56	110
2239 160 110 01 #	160x110	145	75	49	160	110	-

D for 160mm is spigot

LEVEL INVERT REDUCER

To allow for change in pipe diameter with larger end spigot to fitting and other end socket to pipe.

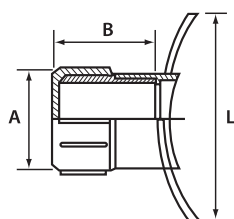


CODE NO.	NOM. SIZE (mm)	DIMENSIONS (mm)					
		L	L1	L2	A	D	D1
2244 056036 01	56x36	73	25	28	20	56	36
2244 082056 01	82x56	105	45	27	33	82	56
2244 110056 01	110x56	150	56	31	68	110	56
2244 110082 01	110x82	126	50	43	33	110	82
2244 200160 01	200x160	213	100	74	39	200	160

INSPECTION

OPENING & FRAME

Solvent weld to pipe for access to stack.

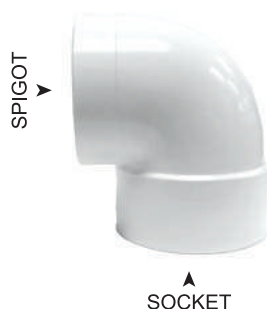
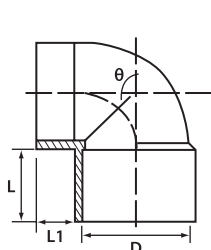


CODE NO.	NOM. SIZE (mm)	DIMENSIONS (mm)		
		L	A	B
2238 082056 01	82x56	94	65	47
2238 110056 01	110x56	122	65	42
2238 110082 01	110x82	122	90	67
2238 160082 01	160x82	175	90	71

Combination of Boss Connector & Socket Plug with screw on cap

WC CONNECTING BEND

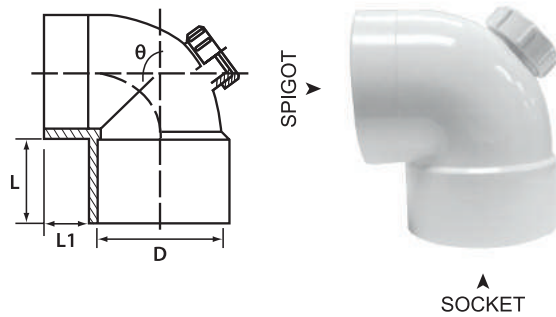
For WC Pans to BS 5503.



CODE NO.	NOM. SIZE (mm)	ANGLE θ	DIMENSIONS (mm)		
			L	L1	D
2208 110 01	110	90°	50	25	110

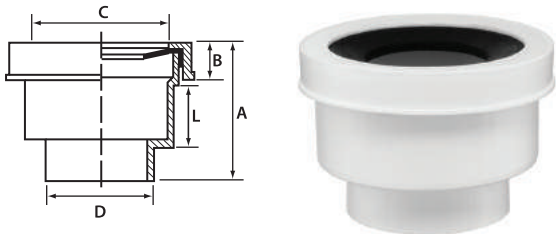
WC CONNECTING BEND

with Inspection Opening
For WC Pans to BS 5503.



CODE NO.	NOM. SIZE (mm)	ANGLE θ	DIMENSIONS (mm)		
			L	L1	D
2209 110 01	110	90°	50	25	110

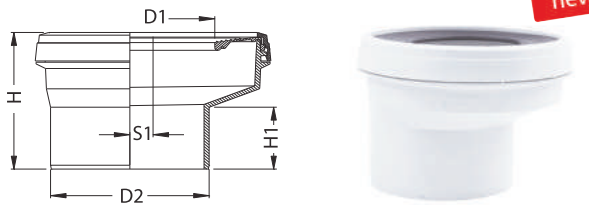
WC PAN CONNECTOR



CODE NO.	NOM. SIZE (mm)	DIMENSIONS (mm)				
		L	A	B	C	D
2240 110 01	110	50	110	25	121	103

With Rubber Ring Seal

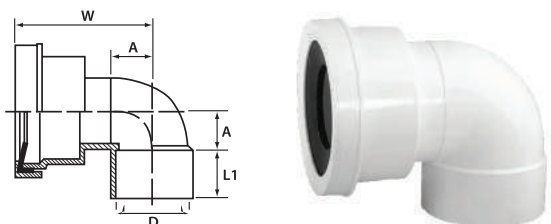
W.C PAN COLLAR (OFFSET)



PRODUCT CODE	NOM. SIZE (mm)	DIMENSIONS (mm)				
		H	H1	D1	D2	S1
2240 100 100 01	110	156	98	80	103	15

WC PAN ELBOW CONNECTOR

To solvent weld to pipes or fittings at both ends



CODE NO.	NOM. SIZE (mm)	DIMENSIONS (mm)			
		L1	W	A	D
2241 110 01	110	50	158	54	110

With Rubber Ring Seal

SEAL RING ADAPTOR

To solvent weld to fittings for conversion to ring seal expansion joint.

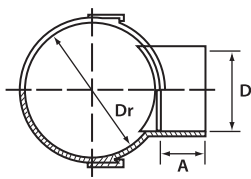


CODE NO.	NOM. SIZE (mm)	DIMENSIONS (mm)		
		L	A	D
2242 082 01	82	31	5	82
2242 110 01	110	38	7	110
2242 160 01	160	42	9	160

With Rubber Ring Seal

BOSS CONNECTOR WITH BRACKET

To connect waste pipe to soil and for venting by solvent cement. Incorporates a bracket specially designed to hold boss connector in place during installation.



CODE NO.	NOM. SIZE (mm)	DIMENSIONS (mm)		
		Dr	D	A
2243 110036 01*	110x36	110	36	19
2243 110043 01*	110x43	110	43	22
2243 110056 01	110x56	110	56	30
2243 160082 01	160x82	160	82	45

* Combination of Boss Connector & Bush Socket Reducer

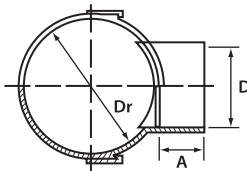
Dr Nominal diameter pipe

D Diameter of inlet pipe

A Socket depth

BOSS CONNECTOR WITH BRACKET

To connect waste pipe to soil and for venting by solvent cement. Incorporates a bracket specially designed to hold boss connector in place during installation.



CODE NO.	NOM. SIZE (mm)	DIMENSIONS (mm)		
		Dr	D	A
2243 082036 01*	82x36	82	36	19
2243 082043 01*	82x43	82	43	26
2243 082056 01	82x56	82	56	31
2243 110082 01	110x82	110	82	45

* Combination of Boss Connector & Bush Socket Reducer

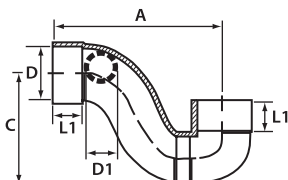
Dr Nominal diameter pipe

D Diameter of inlet pipe

A Socket depth

'P' TRAP

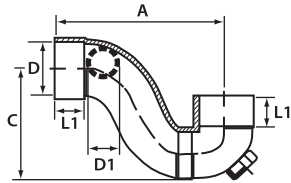
'P' Trap water seal for gas-tight connection to SWV system.



CODE NO.	NOM. SIZE (mm)	DIMENSIONS (mm)				
		L1	A	C	D	D1
2245 056 01	56	30	210	156	56	-
2245 110 01	110	50	325	223	110	56

'P' TRAP *with Inspection opening*

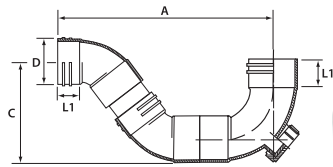
P' Trap with water seal for gas-tight connection to SWV system.



CODE NO.	NOM. SIZE (mm)	DIMENSIONS (mm)				
		L1	A	C	D	D1
2246 056 01	56	30	205	160	56	-
2246 110 01	110	50	325	223	110	56

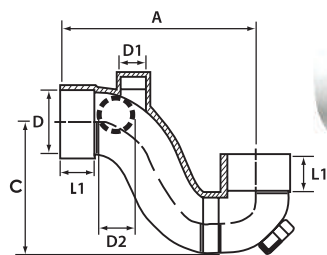
'P' TRAP *with Inspection opening*

P' Trap with water seal for gas-tight connection to SWV system.



CODE NO.	NOM. SIZE (mm)	DIMENSIONS (mm)			
		L1	A	C	D
2246 082 01Δ	82	44	375	157	82

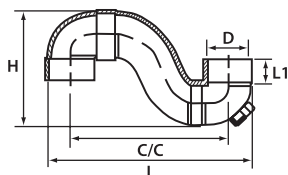
Δ Fabrication item

'P' TRAP WITH VENT *and Inspection Opening*

CODE NO.	NOM. SIZE (mm)	DIMENSIONS (mm)					
		L1	A	C	D	D1	D2
2247 056 01	56x36	30	205	160	56	36	-
2247 110 01	110x56	50	325	223	110	56	56

'S' TRAP *with Inspection opening*

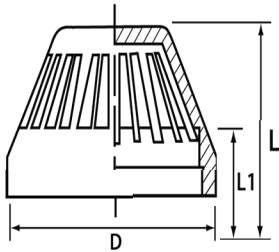
With water seal for gas -tight connection to SWV System.



CODE NO.	NOM. SIZE (mm)	DIMENSIONS (mm)				
		L	L1	H	C/C	D
2248 110 01	110	500	50	270	390	390

VENT COWL

To cap open end of soil and vent stack, solvent welded to pipe.



CODE NO.	NOM. SIZE (mm)	DIMENSIONS (mm)		
		L	L1	D
2250 056 01	56	75	28	56
2250 082 01	82	73	24	82
2250 110 01	110	90	25	110
2250 160 01	160	143	45	160

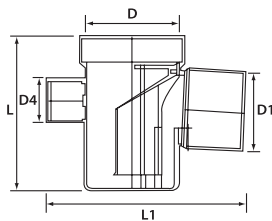
PUSH-ON CAP



PRODUCT CODE	NOM. SIZE (mm)	DIMENSIONS (mm)	
		L	S
2230 POC 50	56	62.5	34
2230 POC 80	82	90	50
2230 POC 100	110	117.5	56
2230 POC 150	160	171	82

TOP REMOVABLE TRAPPED FLOOR GULLY

Integrally moulded boss adaptor with 40mm (D3) & 50mm (D2) socket to accept waste pipe or other fittings.

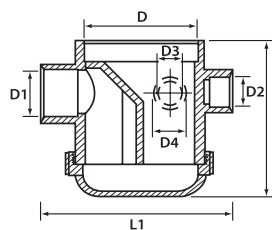


CODE NO.	NOM. SIZE (mm)	DIMENSIONS (mm)					
		L	L1	D	D1	D2-D3-D4	
2260 110 01	110x82	174	220	110	82	56	

FLOOR GULLY WITH TRAP

And Inspection Opening

Integrally moulded boss adaptor with 40mm (D3) & 50mm (D2) socket to accept waste pipe or other fittings.



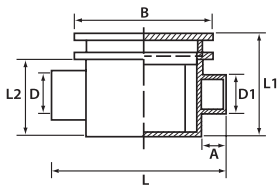
CODE NO.	NOM. SIZE (mm)	DIMENSIONS (mm)						
		L	L1	D	D1	D2-D4	D3	
2259 110082 01	110x82	170	200	110	82	56	15	
2259 110056 01	110x56	170	200	110	56	56	15	

* Combination with Rubber Ring Seal item.

1 and **3** are equipped with 15 mm inlet to accept air-con pipe

FLOOR GULLY WITH TRAP

Floor Gully comes complete with water trap, extension grating collar and grating together with span-in-cover, outlet may be rodded by removing grating.

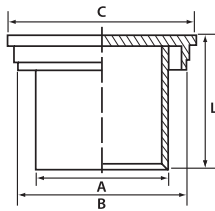


CODE NO.	NOM. SIZE (mm)	DIMENSIONS (mm)						
		L	L1	L2	A	B	D	D1
2258 110046 01	110x43	162	85	71	32	118	43	38

PP grating & Collar

GRATING

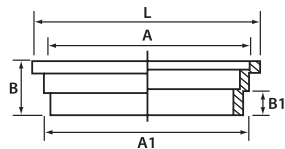
Can be seated into 82 mm or 110 mm drainage pipes for floor wells.



CODE NO.	NOM. SIZE (mm)	DIMENSIONS (mm)	
		L	C
2254 110082 01	110 x 82	73	110
A -82 mm	Seats on 82 mm short length pipe solvent welded to Concentric Reducer		
B -110 mm	Seats on 110 mm short length pipe solvent welded to Floor Gully		

EXTENSION GRATING COLLAR

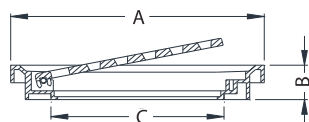
To be used as a collar for grating.



CODE NO.	NOM. SIZE (mm)	DIMENSIONS (mm)				
		L	A	A1	B	B1
2255 110 01	110x14	118	110	110	33	14

SQUARE FLAT GRATING (HEAVY DUTY)

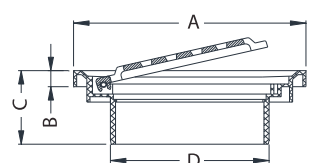
with Edge With Spigot (30mm) (or No Spigot)



CODE NO.	NOM. SIZE (mm)	DIMENSIONS (mm)		
		A	B	C
2254 G150E	150x150	150x150	102	24
2254 G15030E	150x150	150x150	102	55

SQUARE DOMED GRATING (HEAVY DUTY)

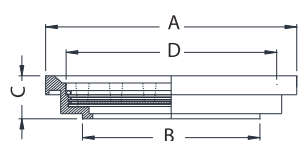
with Edge With Spigot (30mm) (or No Spigot)



PRODUCT CODE	NOM. SIZE (mm)	DIMENSIONS (mm)			
		A	B	C	D
2254 G150ED	150x150	150x150	102	24	102
2254 G15030ED	150x150	150x150	102	56	102

SQUARE SCREW FLAT GRATING (HEAVY DUTY)

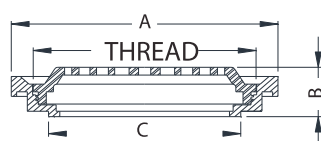
with Edge With Spigot (30mm) (or No Spigot)



PRODUCT CODE	NOM. SIZE (mm)	DIMENSIONS (mm)			
		A	B	C	D
2254 G150SFE	150x150	150x150	106	29.5	Thread
2254 G15030SFE	150x150	150x150	102	55	Thread

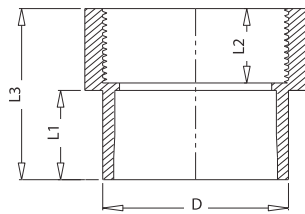
SQUARE SCREW DOMED GRATING

with Edge With Spigot (30mm) (or No Spigot)



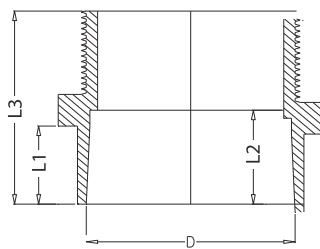
PRODUCT CODE	NOM. SIZE (mm)	DIMENSIONS (mm)			
		A	B	C	D
2254 G150SD	150x150	150x150	22	103	Thread
2254 G15030SD	150x150	150x150	55	102	Thread

FEMALE IRON CONNECTOR



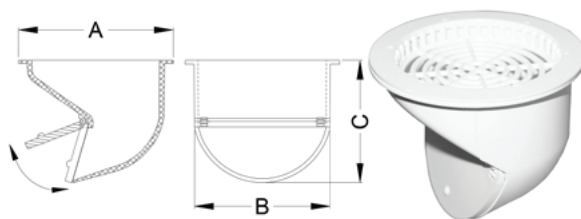
PRODUCT CODE	NOM. SIZE (mm)	DIMENSIONS (mm)			
		L1	L2	L3	D
2228 036 01	36	24	20	46	41.5
2228 043 01	43	30	28	66	49.2
2228 056 01	56	34	22	56	61.5

MALE IRON CONNECTOR



PRODUCT CODE	NOM. SIZE (mm)	DIMENSIONS (mm)			
		L1	L2	L3	D
2227 036 01	36	20	24	47	36.6
2227 043 01	43	20	27.5	51	43.2
2227 056 01	56	30.5	33.5	75	56.2
2227 082 01	82	37	44.5	91.5	83
2227 110 01	100	56	52	119	117.8

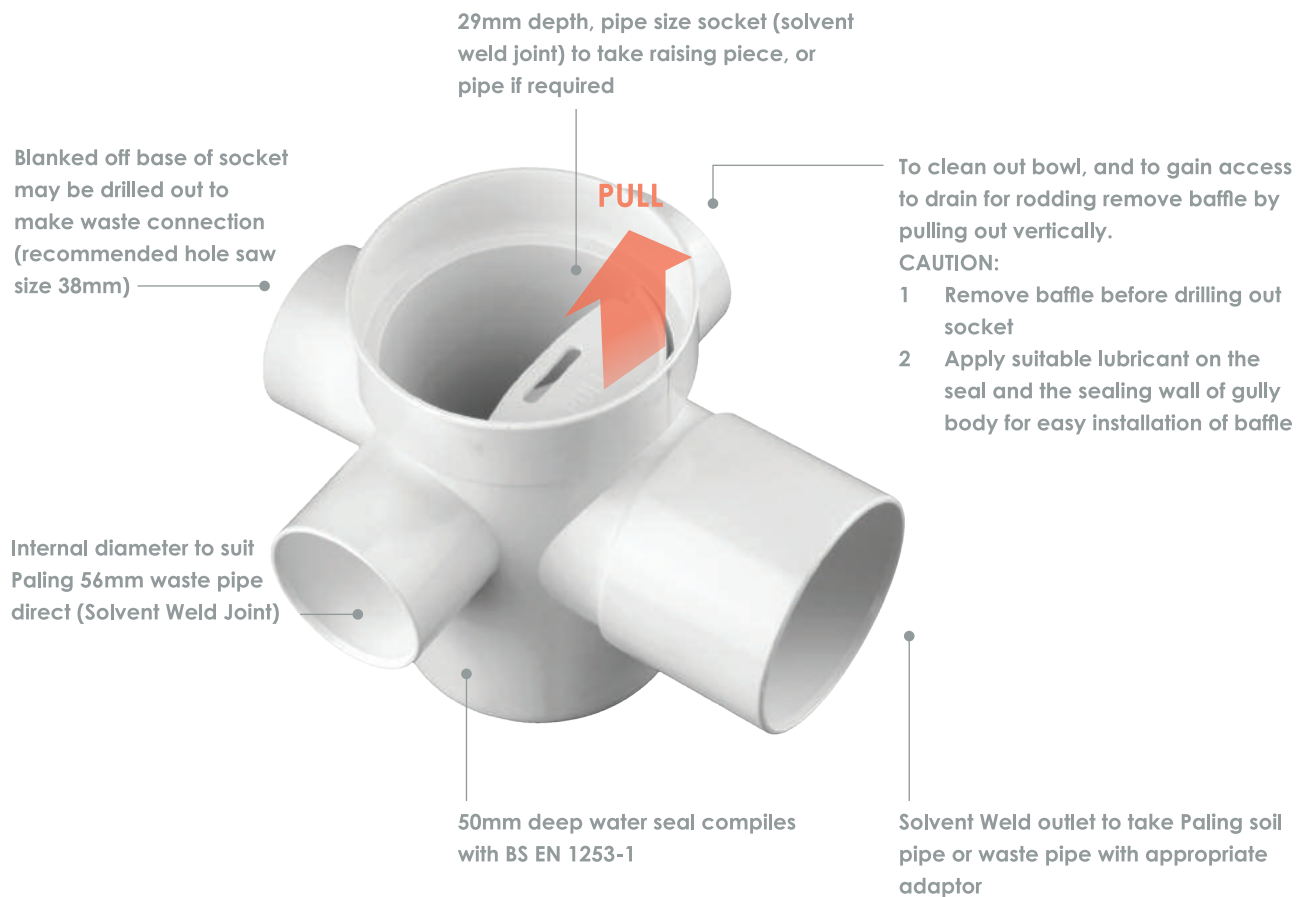
(MIS) ANTI - MOSQUITO DEVICE



PRODUCT CODE	NOM. SIZE (mm)	DIMENSIONS (mm)		
		A	B	C
2254 AMD98(66)	98	98	66	40
2254 AMD98(28)	98	98	87	28
2254 AMD104	104	104	84.5	28
2254 AMD78	78	78	67	40
2254 AMD98R	98	98	87	42
2254 AMD98S	98	98	87	80
2254 AMD98	98	98	87	100
2254 GT98	98	98	88	114

Top Removable Trapped Floor Gully

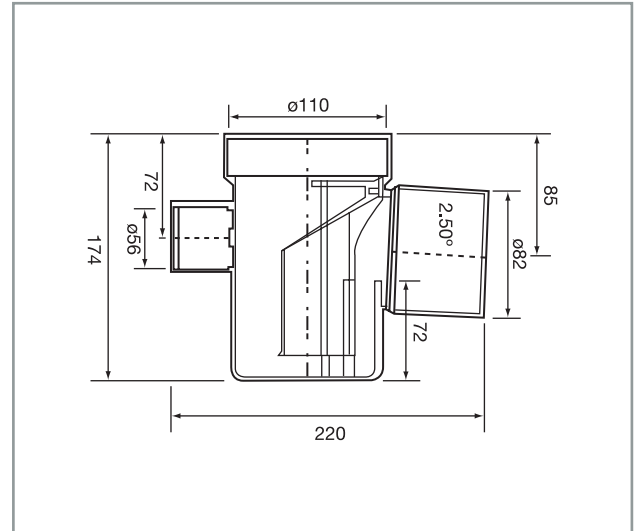
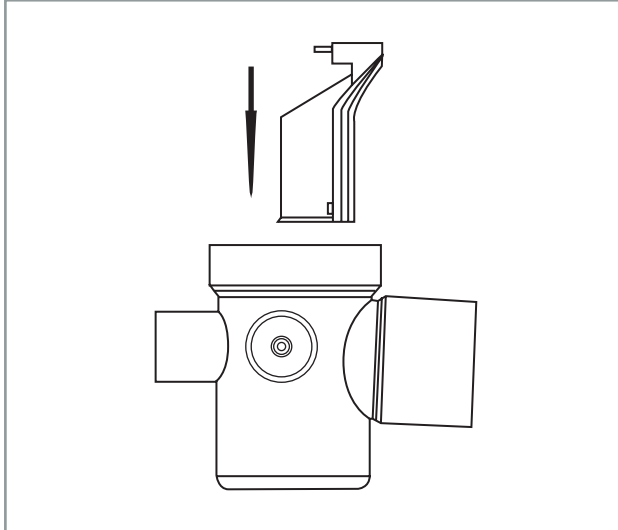
Code No	: 226011001
Material	: PVC-U
	Under-floor trap to receive up to 3 waste pipe connections
	Sockets to accept 56mm waste pipe
	Outlet sockets sizes at 2 – ½ fall: - 82mm
Seal depth	: 50mm meets BS EN 1253-1
	Cleaning access via removable baffle with integral gasket to maintain airtight seal
	Upper socket can accept standard 110 soil pipe
Size	: 110/82
Colour	: White



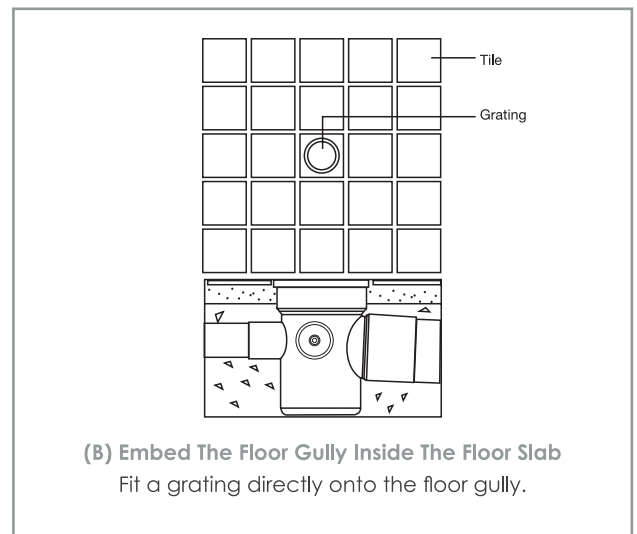
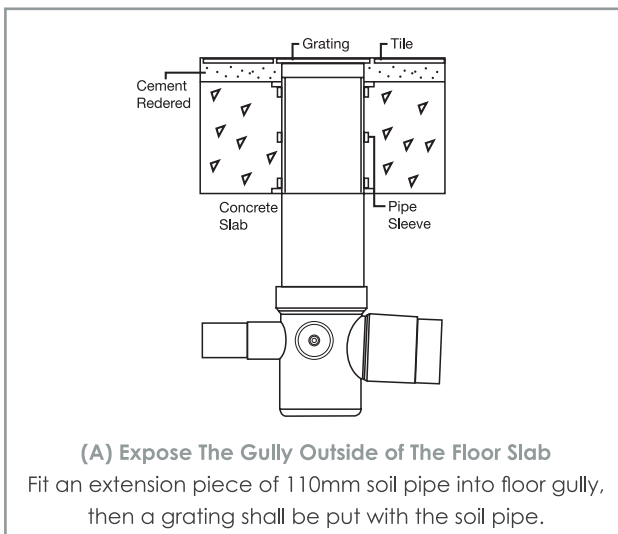
Advantages:

1. Removable, easier and simple way to clean
2. With ring seal, no leakage
3. Extension for adding collar for higher false ceiling
4. Socket, can receive up to 3 waste pipe connection without additional fittings
5. Prevents cockroaches and gases entering building

Dimensions



Method of Installation



- STEP 1** Check overall height of unit with inlet in position, and adjust to suit installation location
(Do NOT solvent weld inlet at this stage)
- STEP 2** Place gully into position
- STEP 3** Solvent-weld waste pipe to outlet socket
- STEP 4** Bring floor screed up to level with bottom of gully inlet

- STEP 5** Allow screed to set, and remove gully inlet
- STEP 6** Apply waterproof mastic to underside of square flange of gully inlet
- STEP 7** Solvent cement gully inlet into position
- STEP 8** Tile up to inlet, and grout using waterproof grout

SOLVENT CEMENT

CODE NO.	DESCRIPTION	GMS	TIN/ CARTON
60500 70P	Paling Clearsolve fast dry	500	20
60100 70	Paling Clearsolve fast dry	100	60
60500 10	Paling Coloursolve slow dry (Blue)	500	20
60500 12	Paling Coloursolve fast dry (Green)	500	20



LOW
V.O.C



PRODUCT RANGE

SOLVENT CEMENT

FEATURES

- PVC Solvent Cement Fast Dry – for pipes and fittings $\leq 80\text{mm}$
- PVC Solvent Cement Slow Dry – for pipes and fittings $\geq 80\text{mm}$
- Moderate solvent odour
- Complies with MS 628 or BS 4346. SPAN listed



ADVANTAGES

- Colour Co-Polymer for Easier Application and Inspection
- Easy to Use
- Premium Quality
- Fast and Slow Drying Solvent available for Strong Bonding



APPLICATION

Paling Solvent Cement is formulated for PVC pipes and fittings.



PALING CLEARsolve / COLOURsolve - FAST DRY

Solid Content: 24%

Consistency property: 1,000 cps

Quality: Tough & Resilient

Solid consist of: MEK & CYC

Colour: Clear / Green

Standard: MS628-4:2015

- Highly soluble fast dry PVC-U Solvent cement.
- Suitable for joining all PVC-U pipes from 15mm - 75mm diameter.
- When applied, it will instantly dissolve and blend with the pipe to produce a film (wall) of 0.4mm thick, so that the fitting gap will be strong and stable.

STRAINING TIME

Pipes with diameters 15mm	10 seconds
Pipes with diameters 25mm to 32mm	8 seconds
Pipes with diameters 50mm	6 seconds
Pipes with diameters 75mm	4 seconds

PALING CLEARsolve / COLOURsolve - SLOW DRY

Solid Content: 24%

Consistency property: 1,000 cps

Quality: Tough & Resilient

Solid consist of: MEK, CYC & THF

Colour: Clear / Blue

Standard: MS628-4:2015

- Highly soluble slow dry PVC-U Solvent cement.
- Suitable for joining all PVC-U pipes from 75mm - 315mm diameter.
- When applied, it will instantly dissolve and blend with the pipe to produce a film (wall) of 0.4mm thick, so that the fitting gap will be strong and stable.

STRAINING TIME

Pipes with diameters 25mm	20 seconds
Pipes with diameters 32mm to 50mm	16 seconds
Pipes with diameters 75mm to 100mm	12 seconds
Pipes with diameters 150mm	8 seconds
Pipes with diameters ≥200mm	4 seconds

ATTENTION:

1. Temperature below 15°C (50°F) will extend the straining period for approximately 5 minutes for each type of pipe.
2. After assembly, the pipe must be tightly held in place and shall only be released after recommended straining time as stipulated. If release prematurely, the pipe to be fitted will spring apart.

PACKING

500g. (with brush) x 20 Tins per ctn.

CTN. SIZE

508mm x 220mm x 225mm

SOLVENT CEMENT REQUIREMENT FOR PVC-U PIPES & FITTINGS

NOMINAL SIZE OF PIPE OR FITTING (mm)	AMOUNT OF SOLVENT CEMENT REQUIRED PER JOINT (g)	NO. OF POSSIBLE JOINTS	
		100 g	500 g
15	1.3	76	383
20	2.0	55	250
25	2.5	40	200
32	3.2	30	156
40	5.0	20	100
50	7.2	13	69
80	12.0	8	41
100	15.5	6	32
155	26.0	2	19
200	49.0	1	10

RECOMMENDATIONS ON BRUSH:

- A : Pipes with diameter 25mm and below - use brush as accompanied and affixed to can
 B : Pipes with diameter 32mm to 50mm - use 1" brush
 C : Pipes with diameter 75mm to 200mm - use 2" brush

PRESSURE TEST:

	TEST PRESSURE	DRYING TIME
Cold Water (20°C)	Below 12kg/cm ² (171psi)	After 1 hour
Hot Water (60°C)	Below 12kg/cm ² (171psi)	After 2 hours

PHYSICAL AND CHEMICAL PROPERTIES

Flash point: 15°C

Flammable Mixture (UN No. 1133)

Colourless vapours may travel considerable distance to ignition sources and cause flash fires or explosions.

Hazard Identification

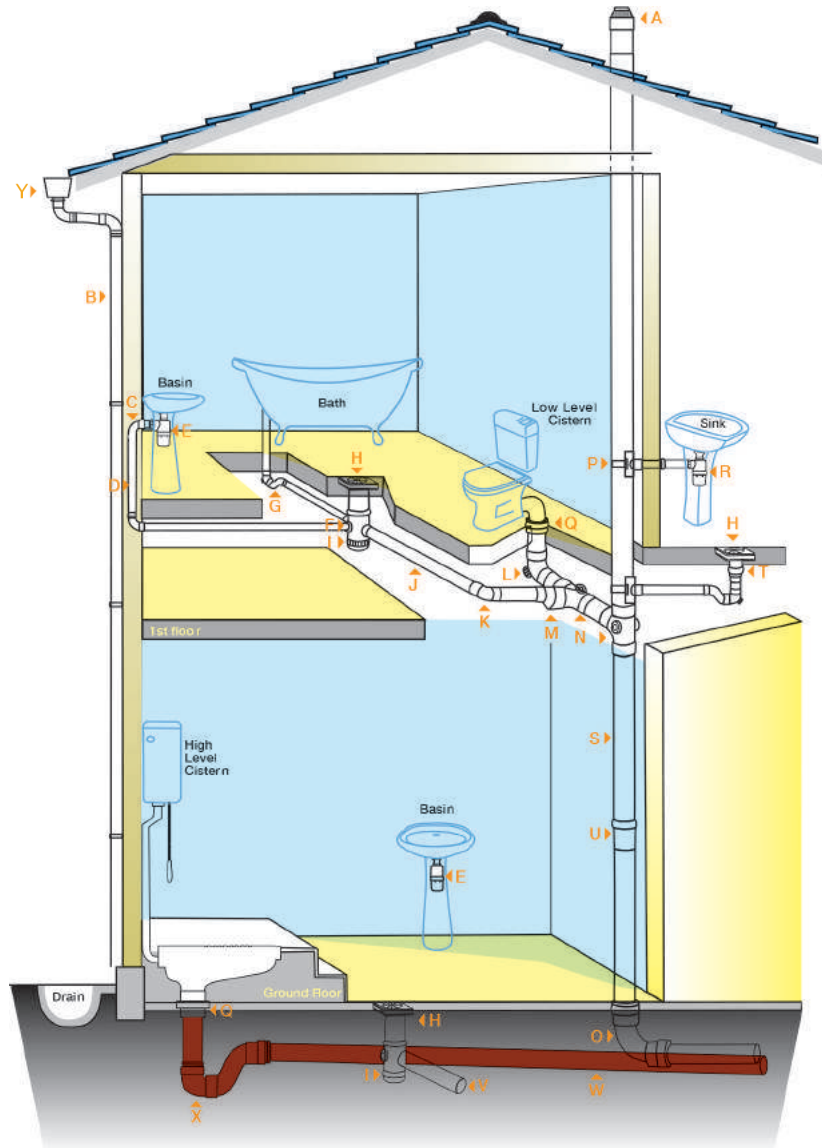
May cause eyes and skin irritation, burns or dermatitis.

Storage

Store in well-ventilated area. Keep away from heat, sparks and flame.

Safety Advice

- Keep out of reach of children.
- Keep away from sources of ignition - No Smoking.
- Avoid contact with eyes.
- In case of fire, use chemical powder, foam or carbon dioxide.

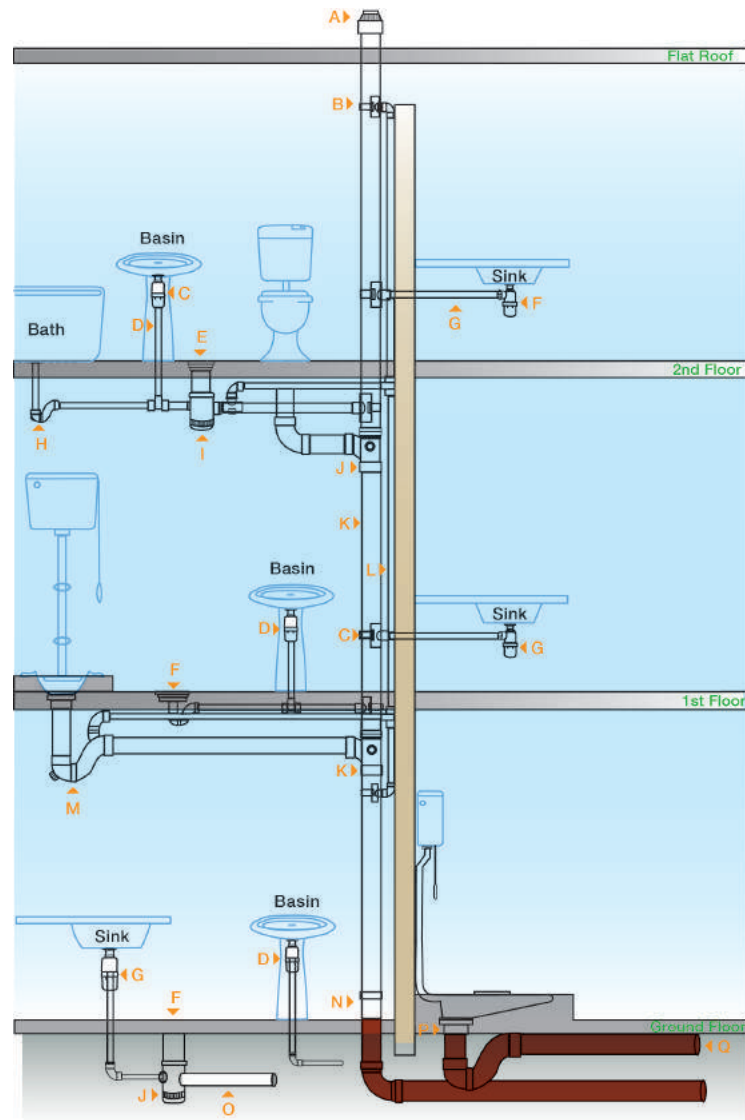


Paling SWV Pipes and Fittings

A	110 mm	Vent Cowl
B	82 mm	PVC-U Rainwater Down Pipe
C	36 mm	Bend (Swept)
D	36 mm	PVC-U Pipe
E	36 mm	Bottle trap
F	43 x 36 mm	Bush Socket Reducer
G	56 mm	'P' Trap
H	110 x 82 mm	Grating With Extension Collar
I	110 x 82 mm	Floor Gully With Trap & I/O
J	82 mm	PVC-U Pipe
K	82 mm	Bend (Swept)
L	110 mm	Bend With I/O (Swept)
M	110 x 82 mm	Level Invert Reducer

N	110 mm	Single Branch (Swept)
O	110 mm	Underground Bend (Swept)
P	110 x 43 mm	Boss Connector
Q	110 mm	WC Pan Connector
R	43 mm	Bottle Trap
S	110 mm	PVC-U Soil Stack
T	82 x 56 mm	Concentric Reducer
U	110 mm	Expansion Coupler
V	82mm	PVC-U Pipe
W	110 mm	Underground PVC-U Pipe
X	110 mm	Underground 'P' Trap
Y	196 mm	PVC-U Elegance gutter

Typical Soil, Waste & Vent Piping Layout for a 3 storeys flat



Paling SWV Pipes and Fittings

A	110 mm	Vent Cowl
B	110 x 56 mm	Boss Connector
C	36 mm	Bottle Trap
D	36 mm	PVC-U Pipe
E	110 x 82 mm	Grating With Extension Collar
F	43 mm	Bottle Trap
G	43 mm	PVC-U Pipe
H	56 mm	'P' Trap
I	110 x 82 mm	Floor Gully With Trap & Inspection Opening

J	110 mm	Branch (Swept)
K	110 mm	PVC-U Soil Stack
L	56 mm	PVC-U Vent Stack
M	110 mm	'P' Trap With Vent
N	110 mm	Expansion Coupler
O	82 mm	PVC-U Pipe
P	110 mm	WC Pan Connector
Q	110 mm	Underground PVC-U Pipe

ASSEMBLY PIPES WITH SOLVENT CEMENT JOINTS

-1- CUT & DEBURR

Where necessary, cut pipe to length at right angle to its axis to maximize surface for bonding. Use of a mitre box and fine tooth saw is recommended.



Cut surface need to be deburred and chamfered to a slight bevel to simplify centred insertion and uniform adhesive distribution between parts.

-2- DEGREASE THE SPIGOT AND SOCKET

Mark the insertion depth to the pipe spigot to avoid excessive application and provides control as to whether pipe has been adequately inserted into the fitting.



Clean parts to be fused with priming fluid to ensure that dirt and possible slip and release agents are removed for optimal results.

-3- APPLY THE SOLVENT CEMENT



can or tin well before using to ensure homogeneity.

Apply adhesive evenly to both sides to be mated using a brushing stroke parallel to or along the pipe axis. It is recommended that a

- 1" brush be used to apply the solvent cement for pipes with diameters between 32 to 50mm
- 2" brush for pipes with diameters above 50mm. Joint must be made within 2 minutes of starting application.

-4- MAKE THE JOINT

Insert pipe straight into the the fitting until bottom together with a quarterly turn during pushing.

Hold the joint firmly in place for at least

- 10 seconds for Fast Dry and
- 20 seconds for Slow Dry

Remove excess solvent cement with a soft cloth. A small closed adhesive ring should be clearly visible at the end of the fitting to signal that the sufficient adhesive has been applied.



-5- CLEAN THE EXCESS SOLVENT CEMENT

When making multiple joints on a piping system, an undisturbed rest period of at least five minutes is required before second bond can be carried out. This is to avoid stress to the first joint, which may weaken its adhesion.



Wait 24 hours before testing or use



FREQUENTLY

ASKED QUESTIONS

WHAT ARE THE ADVANTAGES OF PVC-U ?

PVC-U pipes do not react with chemicals and do not conduct electricity. They are safe for use outdoors or in soil that contains a high level of acidity, alkalis or other chemicals. They are also suitable for use indoors or as a means to convey chemicals or waste products, without the risk of the contents corroding and weakening the integrity of the pipes. They are frequently used in industrial and laboratory applications due to their capacity to withstand high temperatures.

WHAT ARE THE BENEFITS OF ECOTECH PIPES ?

EcoTech Pipes are eco-friendly, as they are made with in-house premium grade reprocessed materials. As a result, their manufacture process saves energy, and they remain resistant to algae while in use.

WHY ARE PVC PIPING SYSTEMS COST EFFECTIVE ?

The cost of PVC piping is only a fraction of the cost for products made of other materials. Installation costs are also lower, because of increased productivity and cheaper transportation expenses due to the product's lower weight. Savings are also realised when work is done to join the piping sections together, because PVC piping makes use of simple PVC connectors and solvent cements, whereas metal piping requires welding and expensive metal connectors to bring into operational use.

DO PVC-U FITTINGS LAST LONG ?

PVC is strong and durable, in spite of its relatively light weight. As a result, this material is suitable for all types of long-term applications, including indoor, outdoor and buried piping system. It remains strong across a range of temperatures, resulting in fewer burst pipes and reduced maintenance issues. In general, the impact strength of PVC piping is actually better than that of comparable alternative materials.

ARE THERE ANY SPECIAL MARKINGS ON PALING PIPES ?

Paling marks all of its pipes with the following: Paling logo, SIRIM certification, SIRIM license number, standards conformance and year of the standard, nominal size, manufacture date, manufacture shift code, lead-free and quality mark.



ABOUT PALING INDUSTRIES



PALING INDUSTRIES SDN. BHD. WAS ESTABLISHED IN 1971 TO PRODUCE uPVC PIPES & FITTINGS IN MALAYSIA. OVER THE YEARS IT HAS EXPANDED ITS RANGE TO OTHER SANITARY PRODUCTS AND SYSTEMS LIKE PLASTIC CISTERNS AND OTHER ACCESSORIES.

These systems are suitable for various applications and building types, including domestic, commercial, industrial and civil construction projects. Paling products are accurately designed to consistently exceed the performance aspects specified under widely recognized standards.

Along with ISO 9001 certification and various approvals by SIRIM and IKRAM, Paling products are accredited by NSF, an authority in water industry standards.

Paling products are manufactured under an effective system of inspection, testing, supervision and control.

ABOUT THE ALIAXIS GROUP

THE ALIAXIS GROUP IS A LEADING GLOBAL MANUFACTURER AND DISTRIBUTOR OF PRIMARY PLASTIC FLUID HANDLING SYSTEMS USED IN RESIDENTIAL AND COMMERCIAL CONSTRUCTION.



Aliaxis is present in more than 45 countries. The Group has more than 100 manufacturing and commercial entities and employs over 16,000 people.

The ethos of the Group allows local and global knowledge of the industry, regulations and building practices to combine and provide consistently excellent customer service to specifiers, consultants, contractors, installers and others.

IN ASIA

Malaysia:
Kuala Lumpur

Singapore

Vietnam:
Ho Chi Minh

China:
Beijing,
Shanghai &
Guangzhou

India:
Bangalore,
Mumbai & Goa



NOTE :

: DATE

NOTE :

: DATE




UNDERGROUND DRAINAGE & SEWER SYSTEM




an O'Allexis company

LEAD-FREE
PIPE SYSTEMS

SUITABLE FOR BUILDINGS,
HOUSES AND CIVIL
CONSTRUCTION PURPOSES.



RAINWATER DRAINAGE SYSTEM



an O'Allexis company

LEAD-FREE
PIPE SYSTEMS

SUITABLE FOR BUILDINGS,
HOUSES AND CIVIL
CONSTRUCTION PURPOSES.




Elegance RAINCUTTERS



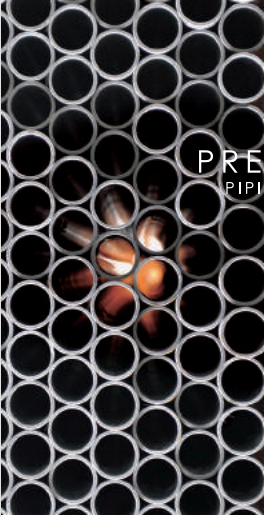
an O'Allexis company

LEAD-FREE
PIPE SYSTEMS

SUITABLE FOR BUILDINGS
AND HOUSES



PRESSURE PIPING SYSTEM



an O'Allexis company

LEAD-FREE
PIPE SYSTEMS

SUITABLE FOR BUILDINGS,
HOUSES AND CIVIL
CONSTRUCTION PURPOSES.




HYDROTECH™ MS3 MULTI-LAYER PVC-U




an O'Allexis company

LEAD-FREE
PIPE SYSTEMS

SUITABLE FOR BUILDINGS,
HOUSES AND CIVIL
CONSTRUCTION PURPOSES.



RAINWATER SYSTEM & GYROJOINT



an O'Allexis company

LEAD-FREE
PIPE SYSTEMS

SUITABLE FOR CIVIL
CONSTRUCTION PURPOSES
AND BUILDINGS.

Disclaimer

This brochure has been compiled by Paling Industries Sdn Bhd ("the company") to promote better understanding of the technical aspects of the Company's products to assist users in obtaining from them the best possible performance. The brochure is supplied subject to acknowledgment of the following conditions:

- i) The brochure is protected by Copyright and may not be copied or reproduced in any form or by any means in whole or in part without prior consent in writing by the Company.
- ii) Product specifications, usage data and advisory information may change from time to time with advances in research and field experience. The Company reserves the right to make such changes at any time without notice.
- iii) Correct usage of the Company's products involve engineering judgements which cannot be properly made without full knowledge of all the conditions pertaining to each specific installation. The Company expressly disclaims all and any liability to any person done by any such person in reliance whether whole or partial upon the whole or any part of the contents of this brochure.
- iv) No offer to trade, nor any conditions of trading, are expressed or implied by the issue or content of this brochure.
- v) Nothing herein shall override the Company's conditions of Sale, which may be obtained from the Registered Office or any Sales Office of the Company.
- vi) This brochure is and shall remain the property of the Company, and shall surrendered on demand to the Company.



we make life flow

www.paling.com.my

PALING INDUSTRIES SDN BHD (11039 V)

Lot 10072, Persiaran Mahogani Utama 2
Seksyen 4, Bandar Utama Batang Kali,
44300 Batang Kali, Selangor , Malaysia.

T : 603 - 6063 6888 (General)
603 - 6057 0580 (Sales)

F : 603 - 6057 0680

E : sales@paling.com.my

Distributed by :

